

Eagle Grinder / Shredder Technical Specifications

The Eagle grinder continues its legacy in the size reduction market with its robust design and proven history. These low-speed high-torque grinders are available in 42" thru 90" widths and are powered by 40 thru 300 HP electric motors. Full functioned touch-screen PLC controls provide all the necessary settings required to run any application.



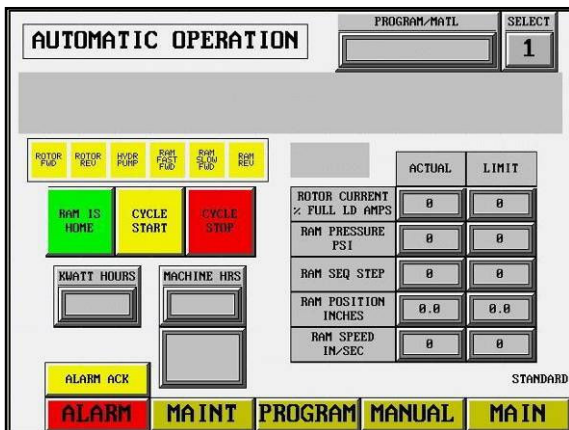
| Specifications | 42" | 52" | 62" | 72" | 90" |
|---------------------------|-------------------|--------------------|---------------------|---------------------|----------------|
| Motor (HP) | 50 - 75 HP | 75 - 125 HP | 100 - 150 HP | 150 - 200 HP | 250 - 300 HP |
| Rotor Dia (in) | 15" | | | 15" or 20" | |
| Rotor Speed (RPM) | 109 - 130 RPM | | | | |
| Cutters (Hawksbill 40mm) | 30 - 60 - 90 | 37 - 74 - 111 | 45 - 90 - 135 | 53 - 106 - 159 | 65 - 130 - 195 |
| Cutters (Zoidal) | 38 - 57 - 76 - 95 | 46 - 69 - 92 - 115 | 56 - 84 - 112 - 140 | 66 - 99 - 132 - 165 | # |
| Ram Height (in) | 11" | | | 17" | |
| Ram Hydraulic Motor (HP) | 7.5 HP | | 15 HP | | |
| Hopper Opening (WxL) (in) | 42" x 48" | 52" x 58" | 62" x 90" | 72" x 101" | 90" x 120" |
| Voltage | 460V / 3 / 60 | | | | |
| Weight Approx. (tons) | 4.5 | 6 | 9.5 | 14 | 25 |

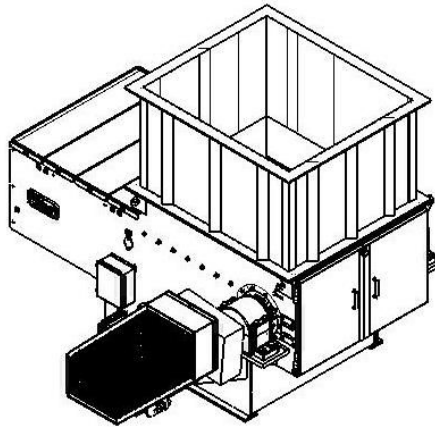
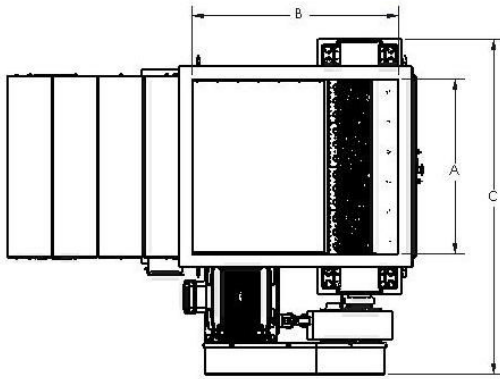
Specifications, appearances, and dimensions are subject to change without notice.



Standard Features

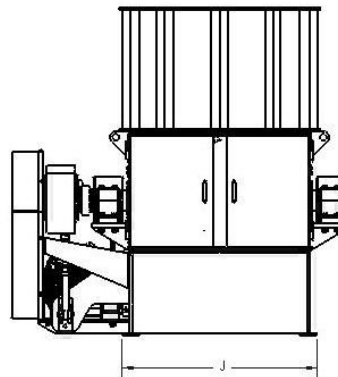
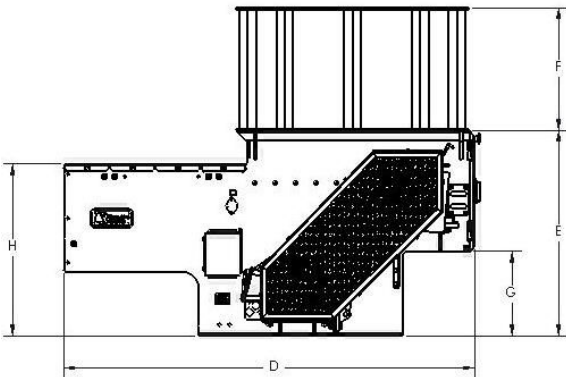
- Solid Alloy Steel One-Piece Forged Rotor Limited Lifetime Warranty
- Oversized Outboard Pillow Block Bearings
- Heavy Duty Construction
- Indexable Hawksbill –or– Zoidal Cutters US Patent
- Allen-Bradley Touch Screen Control
 - Ram Pressure and Motor Amperage controls
- Monorail Self Guiding Ram US Patent
- V-Belt Drive with Falk Gearbox
 - Single Nut Belt Tension Adjustment with Pre-Established Belt Alignment
 - Controlled Over-Torque Limiting Clutch
- Reversible Counterknives
- Self-Cleaning Non-contaminating Rotor Seals
- Two-Speed Hydraulic Ram System
- Straight Walled Hopper - Customizable
- Removable Rear Compartment Access Covers
- Revision Controlled SolidWorks™ 3-D Design
- Warranty Statement
 - One Year Warranty on Manufacturing and Parts
 - Three Year Warranty on Falk Drive Train
 - Limited Lifetime Warranty on Forged Rotor





| | 42" | 52" | 62" | 72" | 90" |
|---|-------|-------|-------|-------|-------|
| A | 42.3 | 51.4 | 62.3 | 73.3 | 90.0 |
| B | 48.0 | 60.0 | 90.0 | 101.0 | 120.0 |
| C | 89.4 | 98.5 | 112.4 | 128.4 | 147.0 |
| D | 102.5 | 120.5 | 185.0 | 222.0 | 260.0 |
| E | 60.3 | | | 72.0 | |
| F | 36.0 | | | | |
| G | 24.8 | | | 29.0 | |
| H | 50.4 | | | 58.0 | |
| J | 48.0 | 57.1 | 68.0 | 79.0 | 96.0 |

Specifications, appearances, and dimensions are subject to change without notice.



Optional Features

- Multiple Cutter Rows
- Belt Free Direct Drive Falk Gearbox
 - Controlled Over-torque Limiting Clutch
- Electric Soft Start and/or VFD Motor Control
- Electric Motor Fluid Coupling
- Ethernet Module for Remote PLC Access
- Corrugated Compartment Plate / Ram Top Plate
- Closed Loop Ram Velocity Speed Control
- Screens
 - Standard Round Hole 3/8" thru 4" Size
 - Triple-Cut Screen Providing Granulator Performance from a Shredder
 - Grooved Screen US Patent With Close Cutter Tolerance
- Water Cooled Rotor and Anvil
- Stainless Steel Machine Components
- Hoppers
 - Angled Hopper Walls
 - Fork Slot Hopper Openings
 - Automatic Cover for Product Containment

Optional Auxiliary Components

- Belt Infeed / Outfeed Systems
- Auger Outfeed Systems
- Shaker Table Infeed / Outfeed Systems
- Magnet Separators
- Metal Separation Equipment Gaylord Box Dumpers
- Outfeed Size Classification System
- Complete System Control Integration



1000 W. Ormsby Ave. #25, Louisville, KY 40210
Phone: (502) 637-6778 Fax (502) 637-6779

www.republicmachine.com
sales@republicmachine.com